

# RAF 500

## Dimensions RAF 500 without Silencing Enclosure

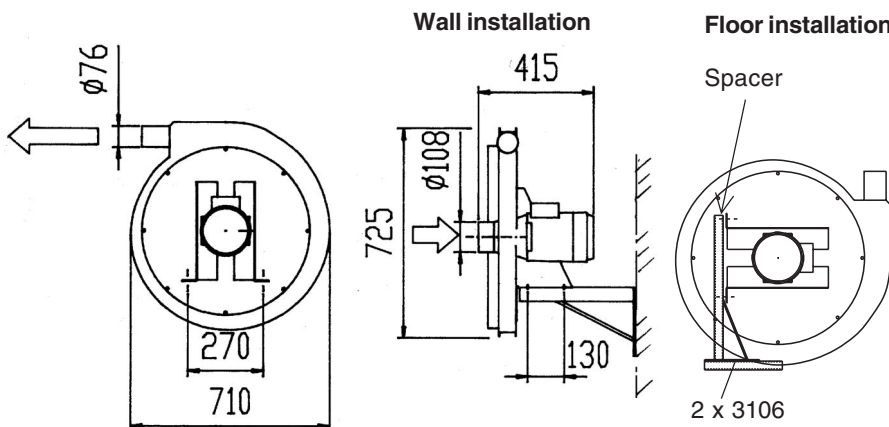
### Without Silencing Enclosure

V	Hz	Part No.
220-240/380-420	50	111900
460 USA/CAN	60	111904

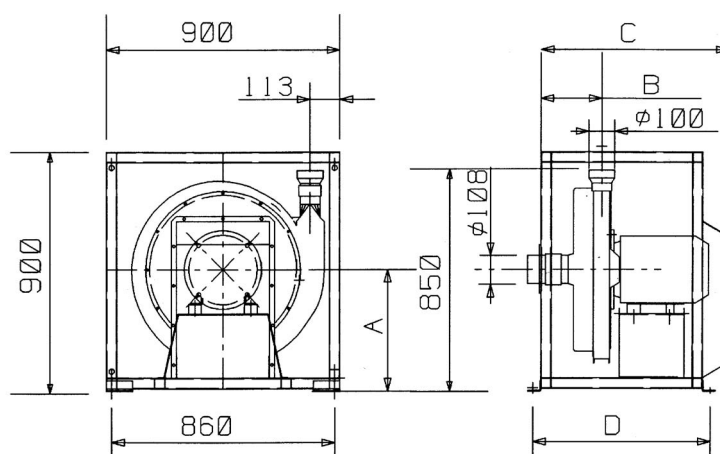
### With Silencing Enclosure

V	Hz	Part No.
220-240/380-420	50	111910
460 USA/CAN	60	111914

The RAF 500 is ideal for small fume extraction systems, for example with Flexpipes. Spiral tubing is generally used. The blower is a direct driven unit with minimal service requirements. (lubrication interval 10000 hours).



## Dimensions RAF 500 with Silencing Enclosure and RAF 500 S

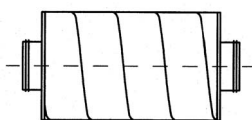
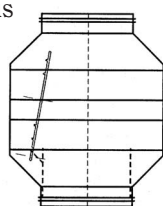


# RAF 500S

### 220-240/380-420 V, 50 Hz Part No.

Without Silencing Enclosure	111800
With Silencing Enclosure	111810

The RAF 500S is for application in extraction systems for lighter dust, ie: wood dust. It is a twin wheel, series connected unit. The unit is direct drive and has minimal service requirements. (Lubrication interval 10000 hours)



	A	B	C	D
RAF 500	450	157	550	510
RAF 500S	460	325	725	685

## Accessories RAF 500 och RAF 500 S

### Part No. 4476 Silencer

100 mm 600/200

Used for silencing exhaust and inlet.

### Art nr 4600 Back Flow Valve 108 mm

Installed on the inlet side of the fan when two or more units are parallel installed. For complimentary tubing details, see pages 36 – 40.

TECHNICAL DATA		RAF 500	RAF 500S
Motor	kW	2.5/3.0	5.5
Pump RPM	rpm	3000	3000
Weight	kg	39	180
Max dp	kPa	5,6	9,5
Max Q	m <sup>3</sup> /h	900	1100
Sound Level*)	dB(A)		
without silencing enclosure		79	79
with silencing enclosure		66	66
Inlet/Outlet	mm	108/76	108/100

\*) with exhaust silencer, 1 m

## Capacity and Power Consumption

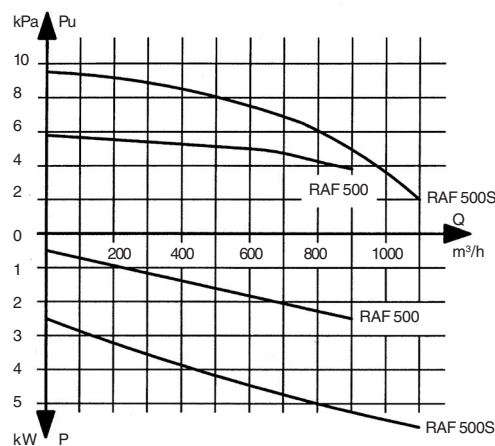


Figure shows available capacity in an extraction system, see explanation on page 7.