

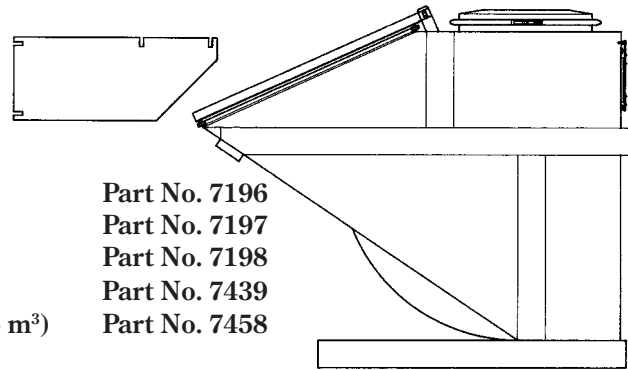
# Tipping Container

Tipping containers can be used as inertial separators by equipping the container with a divider plate and installing inlet/outlet connections on the containers rear wall. Inertial separation is particularly suited to the separation of larger quantities of coarse material. The 2.5 m<sup>3</sup> model can be equipped with a hydraulic damper after purchase (Part No. 7458).

The divider baffle is installed internally in the container between the inlet and outlet.

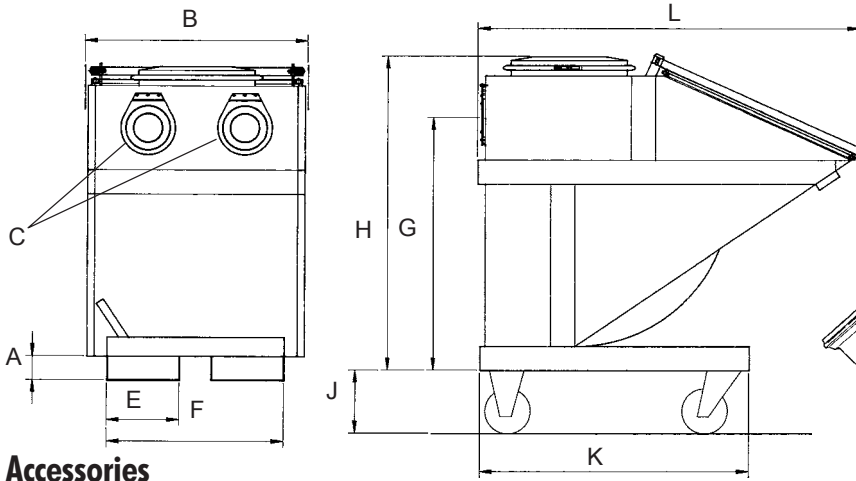
- 0.6 m<sup>3</sup>
- 1.1 m<sup>3</sup>
- 2.5 m<sup>3</sup>
- Divider Baffle
- Hydraulic damper (2,5 m<sup>3</sup>)

- Part No. 7196
- Part No. 7197
- Part No. 7198
- Part No. 7439
- Part No. 7458

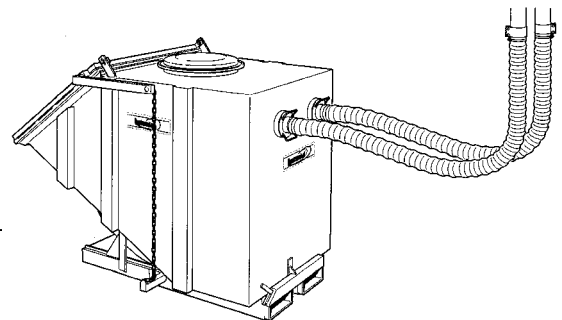


Part No.	Collection Volume	Filling Volume	Weight	Max. Neg. Pressure	A	B	C	E	F	G	H	J	K	L
	m <sup>3</sup>	m <sup>3</sup>												
7196	0,6	0,3	240	40	100	1076	X160	300	730	935	1180	200	960	1380
7197	1,1	0,6	350	40	100	1096	X160	300	730	1050	1295	200	1110	1690
7198	2,5	1,3	570	40	100	1276	X160	300	730	1225	1470	200	1320	1900

The containers are tip-dump style and should be handled with a fork truck. These containers can be equipped with casters.



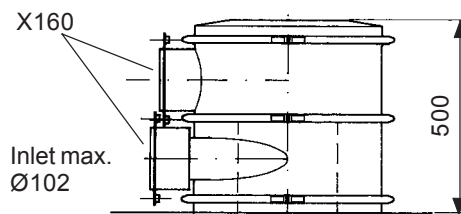
Airflow m <sup>3</sup> /h	Hose Ø mm	Type m <sup>3</sup>
250-500	76	0.6;1.1;2.5
400-900	102	1.1;2.5
900-2000	152	2.5



## Accessories

### Part No. 7448 Cyclone Top

To increase separation efficiency, a cyclone top can be installed on the tipping container. The container then functions as a cyclone separator with a large storage volume for collected material. Suitable air-flows are between 400 – 800 m<sup>3</sup>/h.



When the container is configured as an inertial separator, two hoses are connected to the rear wall of the container. Material is separated with inertial action as air entering the container changes direction abruptly.

### Part No. 7404 Caster Set (4 pcs) max. 1600 kg

### Part No. 7422 Caster Set (4 pcs) max. 2200 kg

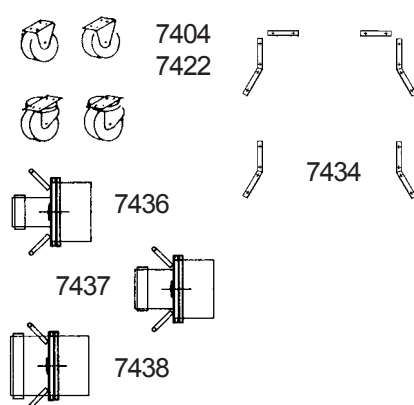
### Part No. 7434 Container Guide Rails

These rails should be anchored to the floor using sleeve or wedge anchors (20 required).

### Part No. 7436 Hose Nipple 76/x160

### Part No. 7437 Hose Nipple 102/x160

### Part No. 7438 Hose Nipple 152/x160



See hose selection page 53. Accessories; bottom screen, drain cock and level sensing available by special order.

## Pressure Loss Inertial Separators

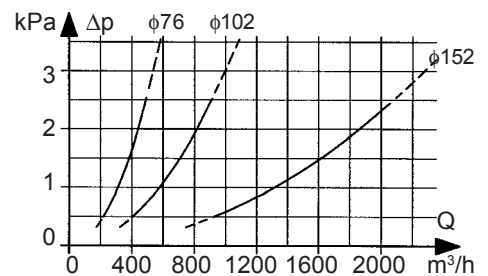


Diagram for Tipping Containers and Containers 4-8 m<sup>3</sup>.