

Abrasion Resistant Bend

Abrasion Resistant Bend 90°	Part No.	Desc.	ϕd (mm)	r (mm)	B (mm)	t (mm)	m (kg)
	3235	$\phi 76$	89	175	50	8	5.0
	3234	$\phi 108$	121	250	50	8	10.6

Joint Abrasion Resistant Bend	Part No.	Desc.	ϕd_1 (mm)	ϕd_2 (mm)	L	m (kg)
	3243	$\phi 76$	98	76	130	0.50
	3244	$\phi 108$	130	108	130	0.70

Reinforced Spiral Tubing

Spiral Tubing	Part No./m	d (mm)	A (m ²)	t (mm)	L (mm)	m (kg/m)
	3013	100	0,008	0,6	3	1.8
	3123	125	0,012	0,6	3	2.2
	3042	160	0,020	0,8	3	3.7
	3095	200	0,031	0,8	3	4.7
	3090	250	0,049	0,8	3	5.9

Bend 90°	Part No.	d (mm)	L (mm)	r (mm)	m (kg)
	3014	100	100	100	0.4
	3124	125	125	125	0.6
	3043	160	160	160	0.8
	3096	200	200	200	1.5
	3091	250	250	250	2.4

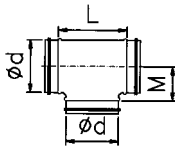
Bend 45° Spiro	Part No.	d (mm)	L (mm)	r (mm)	m (kg)
	3086	100	43	100	0.3
	3125	125	52	125	0.4
	3089	160	66	160	0.6
	3088	200	83	200	0.9
	3087	250	104	250	1.3

Bend 30°	Part No.	d (mm)	L (mm)	r (mm)	m (kg)
	3024	100	28	100	0.3
	3126	125	33	125	0.3
	3025	160	43	160	0.5
	3026	200	54	200	0.7
	3027	250	67	250	1.4

Y-pipe	Part No	d (mm)	L (mm)	M (mm)	r (mm)	m (kg)
	3127	125	375	190	190	1.5
	3128	160	480	240	240	2.5
	3129	200	600	300	300	3.8
	3130	250	750	375	375	8.6

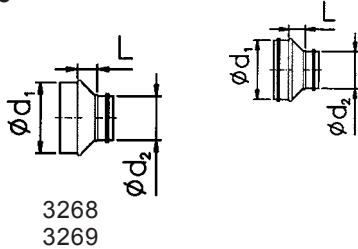
Branch Pipe	Part. No.	Desc.	d_1 (mm)	d_2 (mm)	L (mm)	a (°)	m (kg)
	3131	100/100	100	100	290	45	1.3
	3132	125/100	125	100	290	45	1.4
	3148	125/125	125	125	290	45	1.6
	3133	160/100	160	100	370	45	1.6
	3134	160/125	160	125	370	45	1.9
	3149	160/160	160	160	370	45	2.5
	3135	200/100	200	100	460	45	2.2
	3136	200/125	200	125	460	45	2.3
	3137	200/160	200	160	460	45	2.9
	3150	200/200	200	200	460	45	3.5
	3138	250/160	250	160	575	45	3.4
	3139	250/200	250	200	575	45	4.0
	3151	250/250	250	250	575	45	4.6

T-pipe



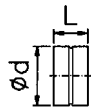
Part No.	Bet	ϕd (mm)	L (mm)	M (mm)	m(kg)
3051	$\phi 160$	160	229	105	0.91

Cone



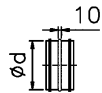
Part No.	d_1 (mm)	d_2 (mm)	L (mm)	m (kg)
3054	100	80	18	0.2
3141	125	100	22	0.2
3157	125	110	48	0.3
3028	160	100	37	0.3
3142	160	125	26	0.2
3098	200	160	26	0.3
3093	250	200	32	0.6
3122	250	160	53	0.5
3268	250	160	113	0.6
3269	250	200	92	0.6

Socket



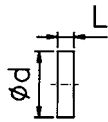
Part No.	d (mm)	L (mm)	m (kg)
3055	100	90	0.1
3143	125	90	0.2
3056	160	90	0.2
3082	200	90	0.3
3083	250	130	0.5

Nipple



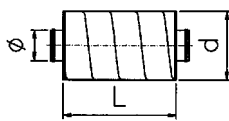
Part No.	d (mm)	m (kg)
3015	100	0.1
3144	125	0.2
3044	160	0.2
3099	200	0.3
3094	250	0.5

Clean out Cover



Part No.	ϕd (mm)	L (mm)	m (kg)
3152	100	40	0.1
3153	125	40	0.1
3154	160	40	0.2
3155	200	40	0.3
3156	250	40	0.5

Inline Silencer



Part No.	ϕ (mm)	L (mm)	d (mm)	m (kg)
3182	160	1200	355	19.8
3183	160	600	355	10.7
3184	160	600	260	6.3
3228	125	300	224	3.0
4476	100	600	200	4.8
4942	100	300	200	2.6
3195	80	300	180	2.2

Technical Data Silencers							
Absorption dB for mean frequency Hz							
Part No.	125	250	500	1k	2k	4k	8k
3182	10	18	34	49	53	30	18
3183	8	15	23	31	40	22	16
3184	4	8	21	37	40	22	14
3195	4	8	16	27	34	35	19
3228	2	7	14	21	26	20	12
4476	8	13	25	40	50	40	21
4942	4	8	14	23	27	25	14

Pressure Loss Tubing

