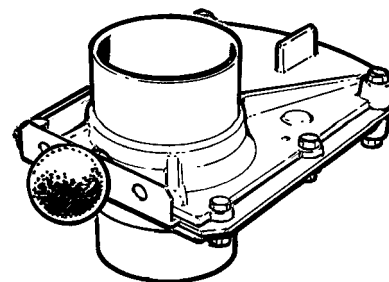


# Manual Shutter Valves

Manual shutter valves are used for stationary machine connection or in cases where a permanent hose connection is desired. The valve is opened by drawing the shutter out manually.

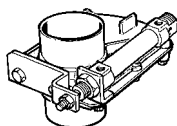
On systems with on demand start-stop, the shutter valve should be equipped with a micro-switch. This will give a start-stop signal for vacuum producer control.

D	control	Part No.
φ50 mm	—	805201
φ50 mm	micro-switch	809101
φ76 mm	—	804300
φ76 mm	micro-switch	809200
φ108 mm	—	808300
φ160 mm	—	8254
φ200 mm*/	—	8017
φ250 mm*/	—	8016



Manual Shutter Valve

\*/ Note! Shutter Valve φ200 och φ250 only for clean air.



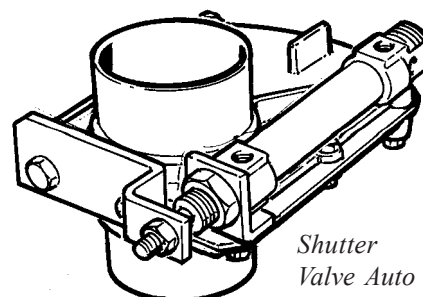
**Part No. 8456**  
Manual Shutter Valve φ50 with micro-switch and attached lead

# Shutter Valve Auto

The shutter valve has a stainless steel gate. The gate is driven by a pneumatic cylinder. For applications on work stations and in the tubing system.

With intermittent start-stop, a pressure switch is installed using a "T" fitting in the compressed air supply. This provides an electrical start-stop signal to the vacuum producer.

D	Part No.
φ50 mm	805308
φ76 mm	804408
φ108 mm	808404
φ160 mm	825404
φ200 mm*/	807500
φ250 mm*/	807800

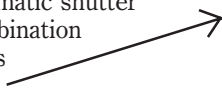


Shutter Valve Auto

\*/ Note! Shutter Valve φ200 och φ250 only for clean air.

# Electrical Shutter Valve

When a shutter needs to be electrically controlled, use an automatic shutter valve, as above, in combination with a solenoid valve as shown here.



Solenoid Valve Part No.	V
8088	24 V AC
8054	230 V
8026	24 V DC

Electrically driven shutter valves can be built for special applications. Note that the speed of the gate will be much slower for an electrical shutter than for a standard shutter.

**Accessories Shutter Valve Auto and EI**



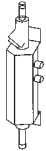
**Part No. 8047 Pressure Switch**  
Installed on pneumatic cylinders to supply electrical signals for start-stop control of vacuum producer.



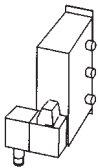
**Part No. 8152 T Fitting**  
Required for installation of the 8047 Pressure Switch



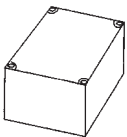
**Part No. 8040 Manual Switch**  
For manual actuation of auto shutters.



**Part No. 8030 Flow Valve**  
Actuates an auto shutter when installed in compressed air supply to a pneumatic tool. Controls on demand extraction.



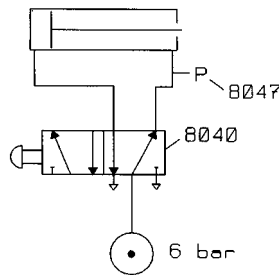
**Part No. 8054 Solenoid 230 V AC**  
**Part No. 8088 Solenoid 24 V AC 50/60 Hz**  
A separate solenoid is used for example, on stationary machines and in connection with a manual switch. The solenoid is connected pneumatically to the auto shutter. Generally installed in control panel of the subject machine.



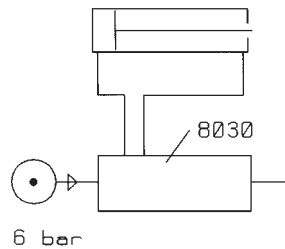
**Part No. 8196 Auto-start 230 vac**  
Auto-start control is used for on demand extraction for electric tools ( max 8 amps on subject tool ). The auto-start current sensor closes a relay to give solenoid actuation of an auto shutter.

**Connection Schematic**

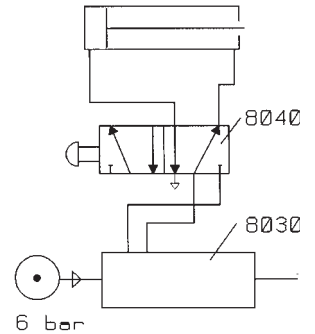
**Manual, intermittent start/stop**



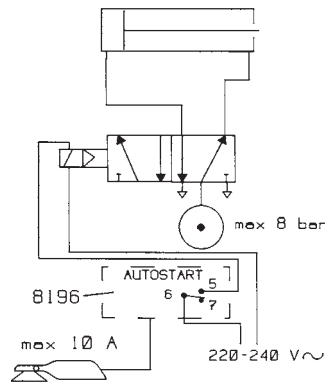
**Pneumatic Tool**



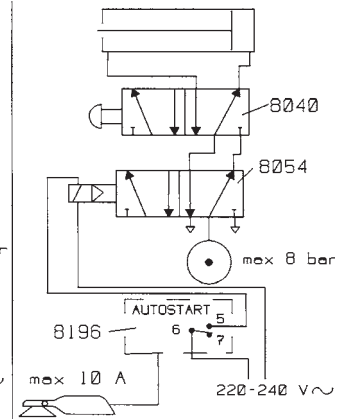
**Pneumatic Tool + man**



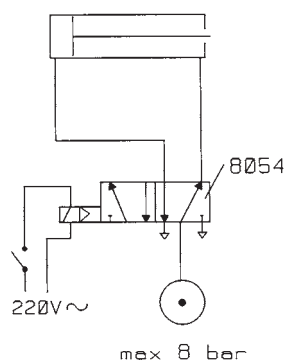
**Electric Tool**



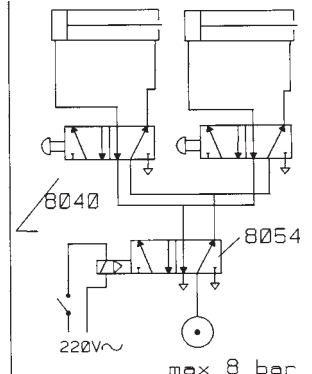
**Electric Tool + man**



**Stationary Machine**



**Stationary Machine, 2**



Cont Accessories next page